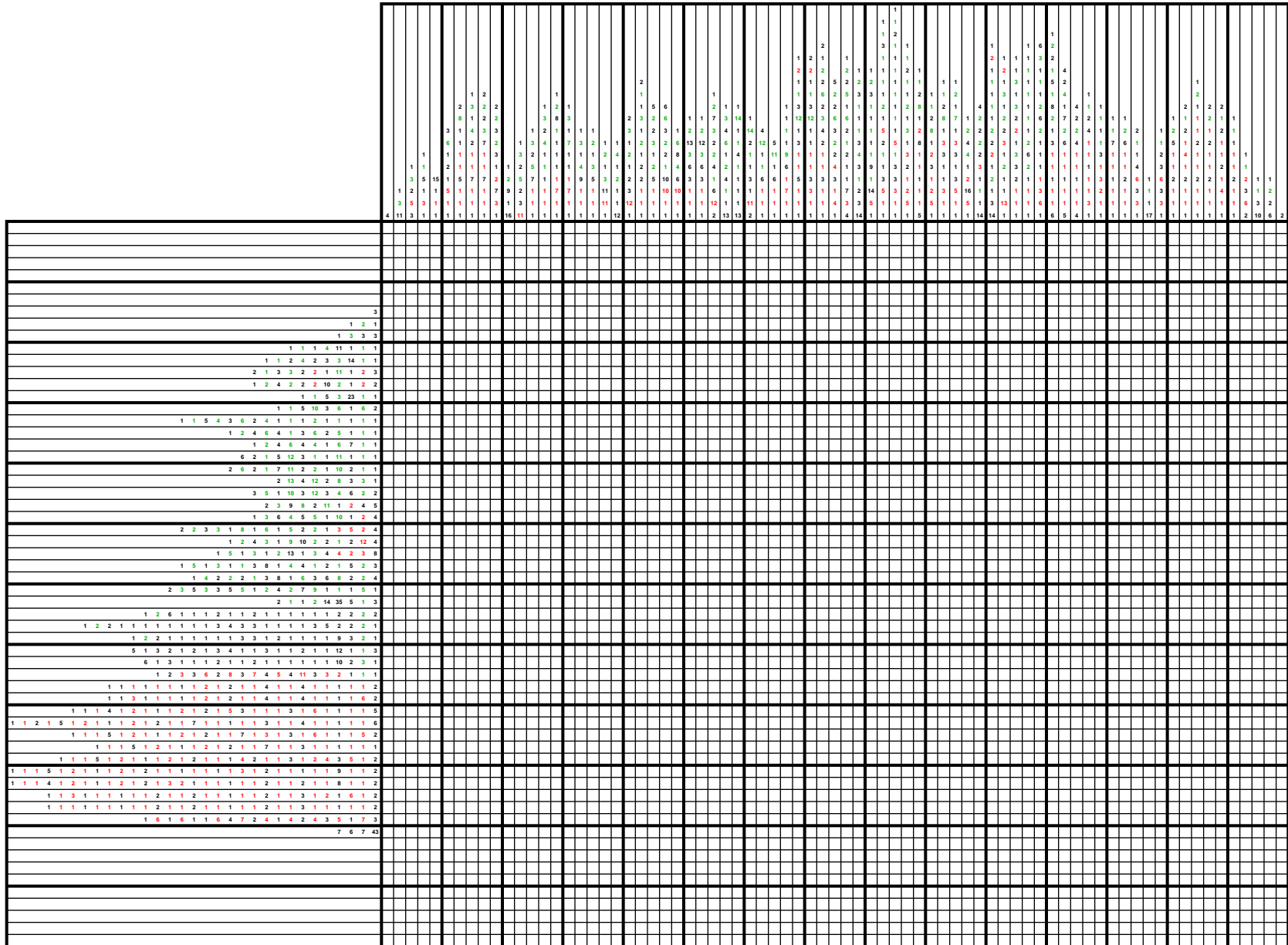


Web Paint-by-Number Puzzle #17644

WHL - Logo #22 (that's all folks!)

created by Russell Reed

Feb 28, 2012



Shop Tool #7

created by Brian Bellis

Mar 7, 2012

			1	1	4						3					4	1	1		
			5	5	1						1					1	5	5		
		6	1	1	1						1					1	1	1	6	
		1	3	3	3	5		2	3	3	1	3	2		5	3	3	3	1	
		3	2	3	3	4	13	8	8	8	5	8	8	13	4	3	3	2	3	
			4	4																
	1	2	1	4	1	2	1													
	1	2	1	8	1	2	1													
		1	2	12	2	1														
		1	2	2	2	2	1													
1	2	1	2	2	1	2	1													
			4	2	2	4														
						18														
			4	4	1	3	4													
			4	4	1	3	4													
						8														
						10														
						14														
						16														
						16														

Web Paint-by-Number Puzzle #17693

Welcome.

created by Aldege Cholette

Feb 26, 2012

AHL - Logo #10
created by Russell Reed
Mar 1, 2012

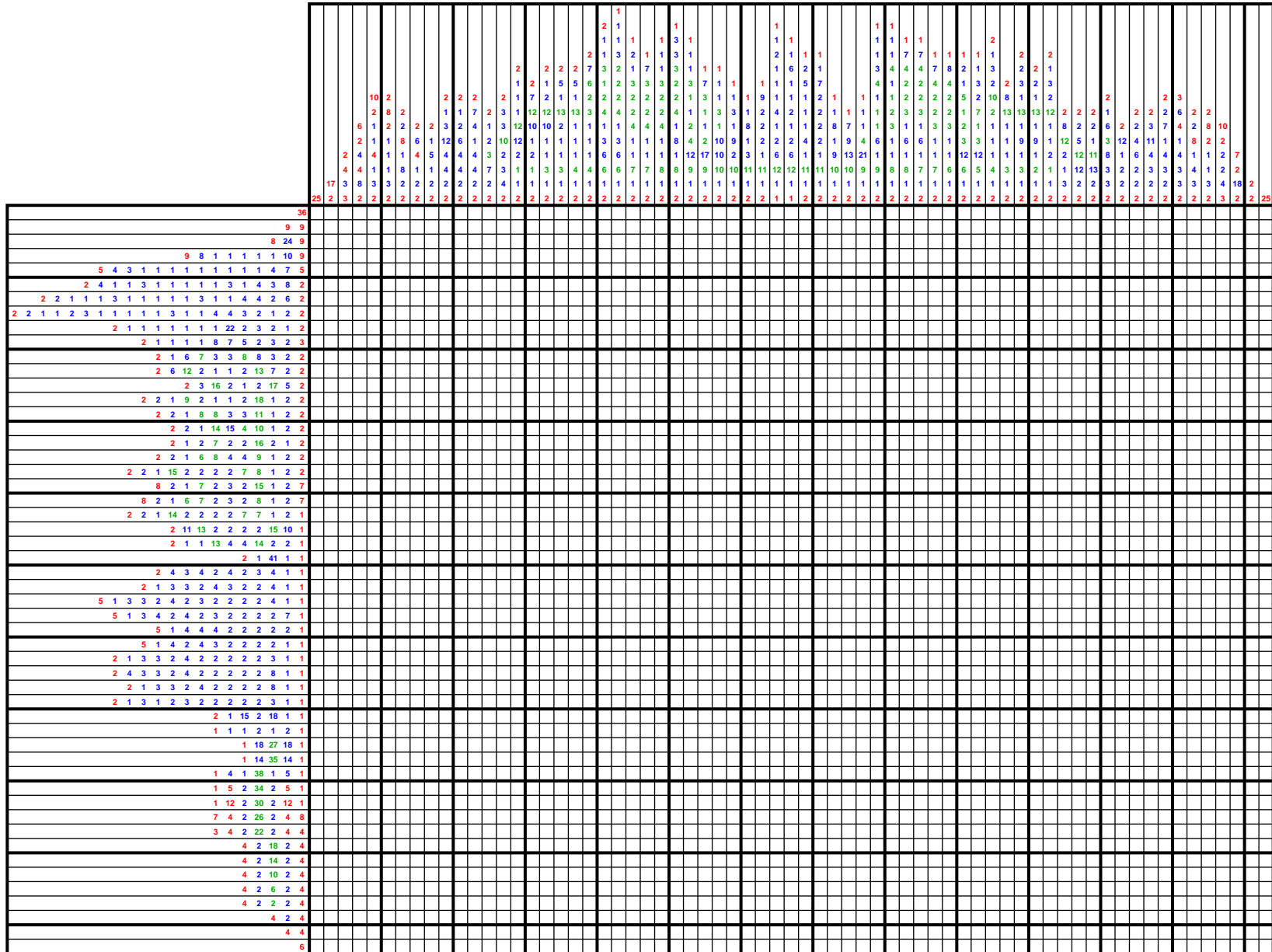
A large grid puzzle with numbers and some colored cells (red and blue) indicating the 'AHL - Logo #10' design.

Web Paint-by-Number Puzzle #17740

AHL - Logo #11

created by Russell Reed

Mar 1, 2012

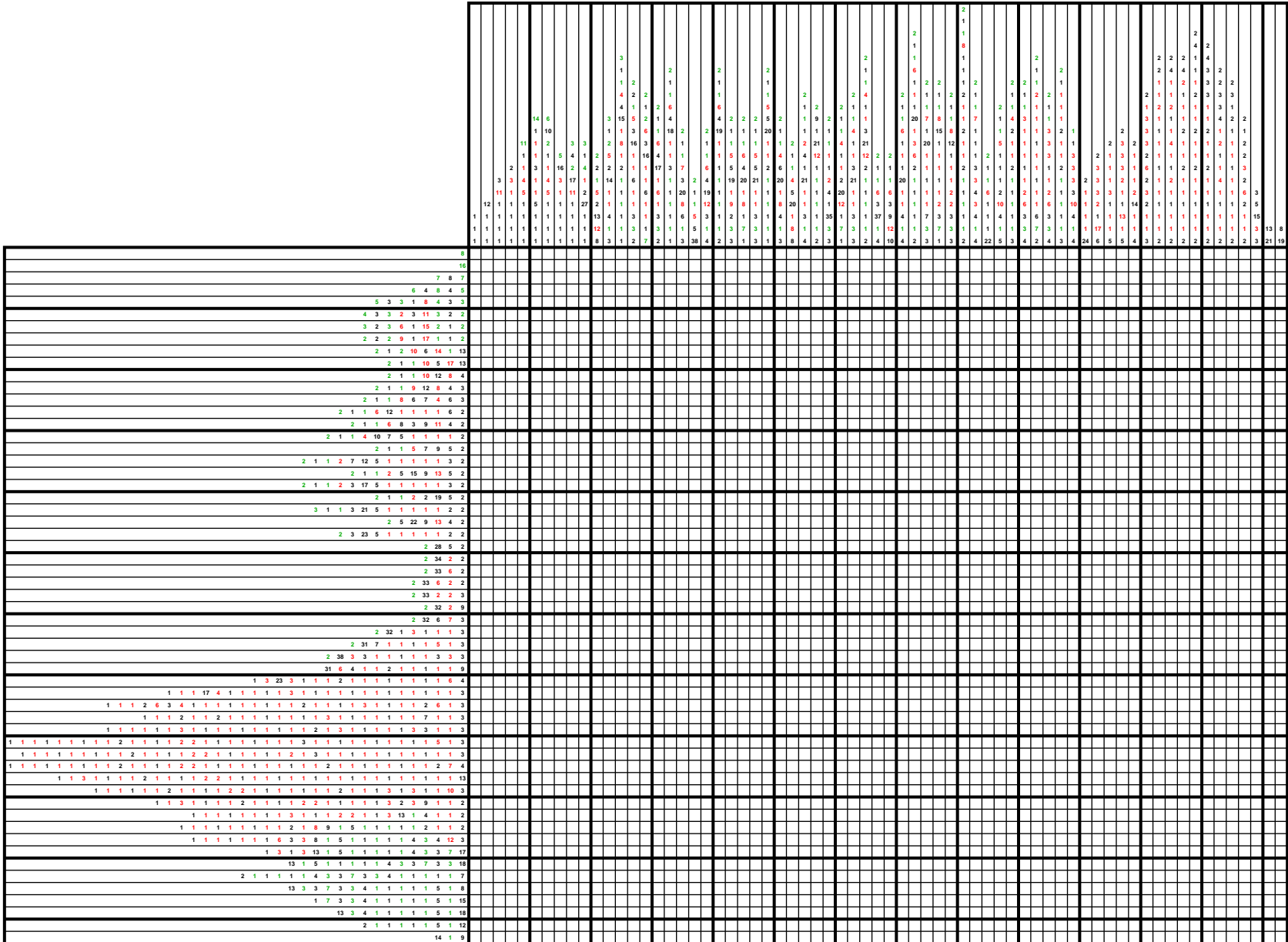


Web Paint-by-Number Puzzle #17767

AHL - Logo #16

created by Russell Reed

Mar 3, 2012



Web Paint-by-Number Puzzle #17768

AHL - Logo #17

created by Russell Reed
Mar 4, 2012

The image shows a large grid for a paint-by-number puzzle. The grid is mostly empty, with a small section on the left containing numbers. Above the grid, there is a long horizontal strip of numbers, likely representing the puzzle's dimensions or a key. The numbers in the grid are small and scattered, indicating the starting points for different colors.

AHL - Logo #19

created by Russell Reed

Mar 7, 2012

